

## OPTION A: Sights & Sounds: Beale Street Walking Tour

Beale Street was the birthplace of the Blues and it's still the heart of Memphis' live music scene. On this walking tour, discover Memphis' music legacy as you explore the iconic street and visit historic venues, shops, and sites associated with musical icons like Elvis Presley, B.B.King, and Louis Armstrong.

The tour starts at Alfred's on Beale (197 Beale Street); continues on Beale Street; stops at Handy Park; visits Lansky Bros. Clothier to the King; and ends at A. Schwab variety store.

Tour must be booked in advance here:

[https://www.tripadvisor.com/AttractionProductReview-g55197-d12518574-Beale Street Guided Walking Tour-Memphis Tennessee.html](https://www.tripadvisor.com/AttractionProductReview-g55197-d12518574-Beale_Street_Guided_Walking_Tour-Memphis_Tennessee.html)

**Admission:** \$12.34

---

**Enjoy lunch at Alfred's on Beale before your tour.**

Here is Alfred's menu: <http://www.alfredsonbeale.com/pdf/Alfreds-Menu.pdf>

**Other nearby dining options:**

Lew's Blue Note Bar & Grill – 341 Beale Street Memphis, TN 38103

Blues City Café - 138 Beale St, Memphis, TN 38103

Tin Roof - 315 Beale St Memphis, TN 38103

Kings Palace Café - 162 Beale St Memphis, TN 38103

**Parking Options:**

**Parking Lot on Fourth at Beale**

**150 S Fourth Street, Memphis, TN 38103**

Hourly rate: \$4 flat

**Parking Lot at 249 Peabody Place**

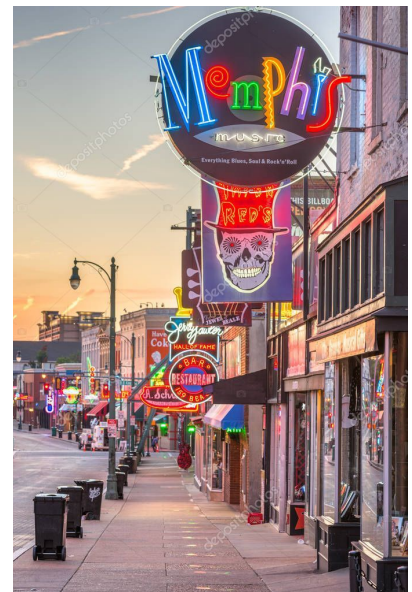
**249 Peabody Pl, Memphis, TN 38103**

Daily rate: \$5

**Peabody Place Blues Parking Garage**

**149 Peabody Pl, Memphis, TN 38103**

Hourly rate: \$1 per hour; \$12 max per 24 hours



## **OPTION B: Experience Music History: Graceland**

Elvis Presley's Graceland is 100+ acres dedicated to the King of Rock 'n' Roll! Tour the all-new Elvis Presley's Memphis Entertainment Complex that includes the auto museum; the career museum; the discovery exhibits; and the jets.

Graceland is located at 3764 Elvis Presley Blvd., a very short walk across to the hotel.

Due to limits on the number of guests admitted, your tickets should be purchased in advanced here:

<https://www.graceland.com/ticket-information>

Admission for the Elvis Presley's Memphis + Planes Tour: \$47.00  
(Other more in-depth tours are also available on the website.)

---

### **Dining is available inside Graceland.**

Here are your dining options: <https://www.graceland.com/dining>

### **Other nearby dining options:**

Rock 'n Roll Café- 3855 Elvis Presley Blvd. Memphis, TN 38116

Kountry Cookin'- 1128 Winchester Rd. Memphis, TN 38116

*If walking is not an option for you...*

### **Parking Option:**

#### **Onsite parking at Graceland**

Flat rate: \$10



## **OPTION C: Downtown Landmarks: Bass Pro Shop at the Pyramid & Mud Island**

This new national retail experience, located inside the massive iconic Pyramid, offers something for everyone- from the serious outdoor enthusiast to families looking to have some fun. Ride the world's tallest free-standing elevator 28 stories and view Memphis from the top of the Pyramid! While inside, visit the archery & pistol range; the interactive wetlands museum; the "underwater" bowling alley; and more!

The Pyramid is located at 1 Bass Pro Drive Memphis, TN 38105.

Some activities have fees.

Visit this site for a list of activities and pricing: <https://big-cypress.com/activities/>

---

### **Dining is available inside the Pyramid.**

See the Fishbowl's menu here: <https://big-cypress.com/wp-content/uploads/2020/11/Fishbowl-MAIN-MENU-scaled.jpg>

See the Lookout's menu here: <https://big-cypress.com/wp-content/uploads/2019/10/Lookout Main-Menu 092419.pdf>

**Parking Option:  
Free onsite**



## **OPTION D: Repurposed for Purpose: Crosstown Concourse**

From a Sears distribution center to a thriving arts & culture phenomenon, the Crosstown Concourse is a multi-use facility that you have to see to believe. Very few places exist where people can live, shop for groceries, attend school, work out at a YMCA, have a doctor visit, and so much more IN ONE LOCATION! And while you're there, peek inside their awesome demonstration kitchen.

Crosstown Concourse is located at 1350 Concourse Ave. Memphis, TN 38104.

View a directory of tenants in the Crosstown Concourse here:

<https://crosstownconcourse.com/directory>

---

**A collection of restaurants is located inside Crosstown Concourse, with many offering locally-sourced foods.**

See the available dining options here: <https://crosstownconcourse.com/eat>

**Parking Option:**

**Free onsite**



## **OPTION E: Adventures in Climbing: Memphis Rox**

This is not your average gym! It's a gym with a mission- a family institution that uses wall climbing to bring people together; foster community; and create a culture of encouragement, empowerment, and accomplishment. No one is ever turned away for inability to pay! Volunteering at the gym or a local charity can be the payment, if need be. Since it's for a good cause, GET CLIMBING!

Masks and social distancing are required at all times inside the gym.

Memphis Rox is located at 879 E. McLemore Memphis, TN 38106.

**This personal waiver is required prior to climbing:**

<https://waiver.smartwaiver.com/w/5a64b9abd4089/web/>

**Admission:** \$12.00 for a day pass

---

### **Nearby dining options:**

Slim & Husky's Pizza 634 Union Ave. Memphis, TN 38103

Chef Tam's Underground Café 668 Union Ave. Memphis, TN 38103

### **Parking Option:**

**Free onsite**



## **OPTION F: Family Fun: The Memphis Zoo**

One of the top zoos in the country is waiting for you and your family! Explore the outdoors and visit with exotic animals.

Masks are required inside the zoo.

The Memphis Zoo is located at 2000 Prentiss Place Memphis, TN 38112.

**Admission:** FREE on Tuesdays

---

**Dining options are available inside the Memphis Zoo.**

See the available dining options here: <https://www.memphiszoo.org/dining>

**Parking Option:** Daily rate: \$5

